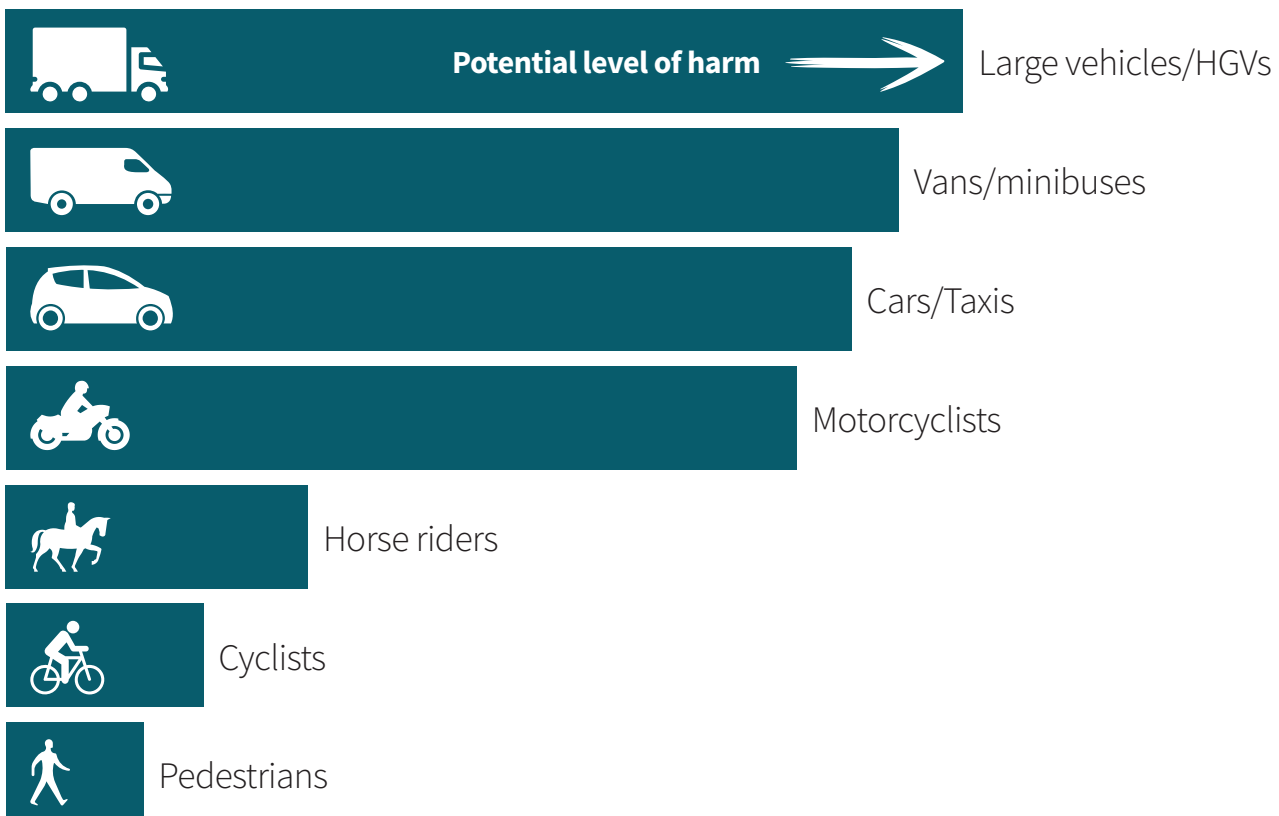


Highway Code update: some key changes

Over 40 changes to the Highway Code came into effect on 29 January 2022¹. The changes include both updates to existing rules as well as the addition of new text. You can see the changes in full by visiting the [government website](#) but we've summarised some of the key changes which you should be aware of below.

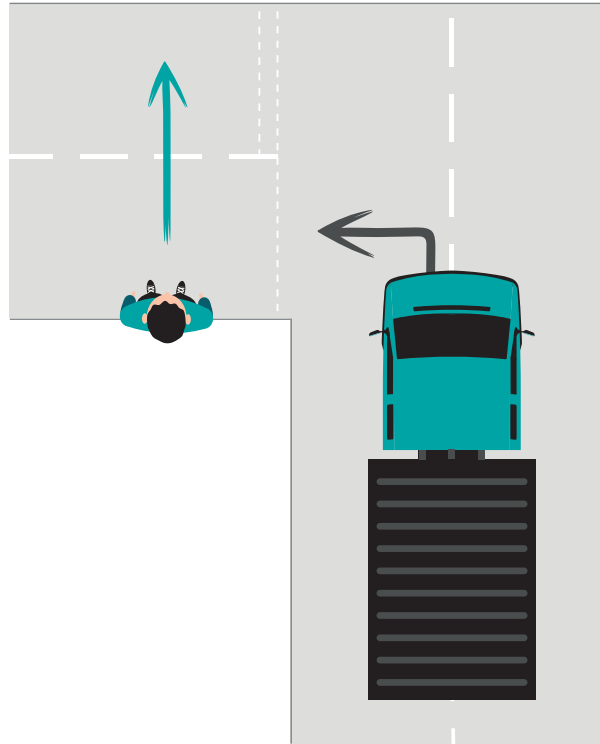
New: Hierarchy of Road Users

Those road users who can cause the greatest harm have the greatest responsibility to reduce the danger they pose to other Vulnerable Road Users (VRUs).



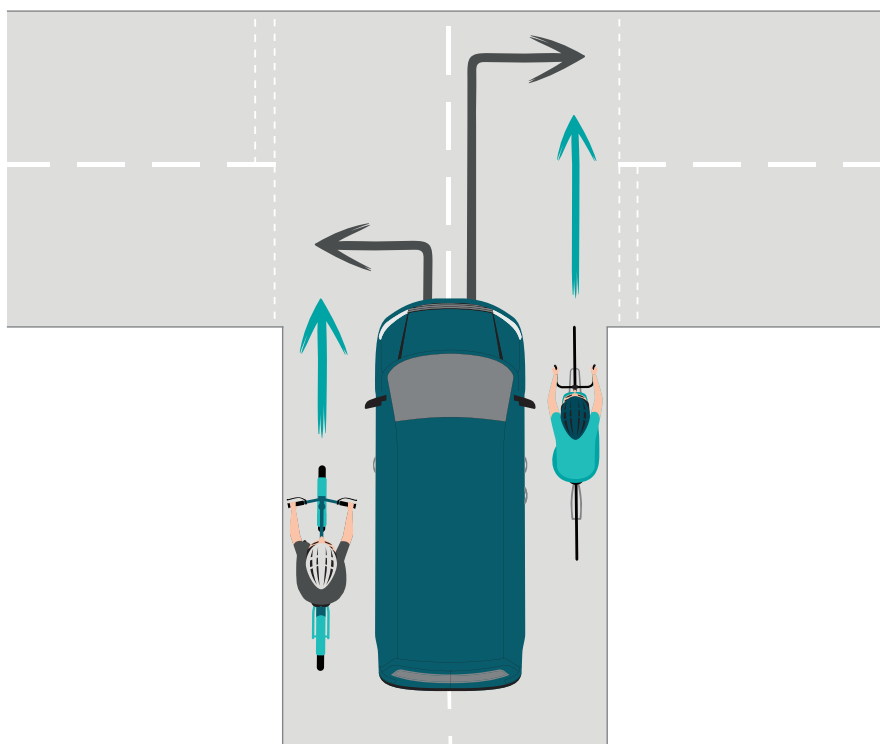
New: Priority for pedestrians at junctions

When turning into or out of a junction, give way to pedestrians crossing or waiting to cross the road.



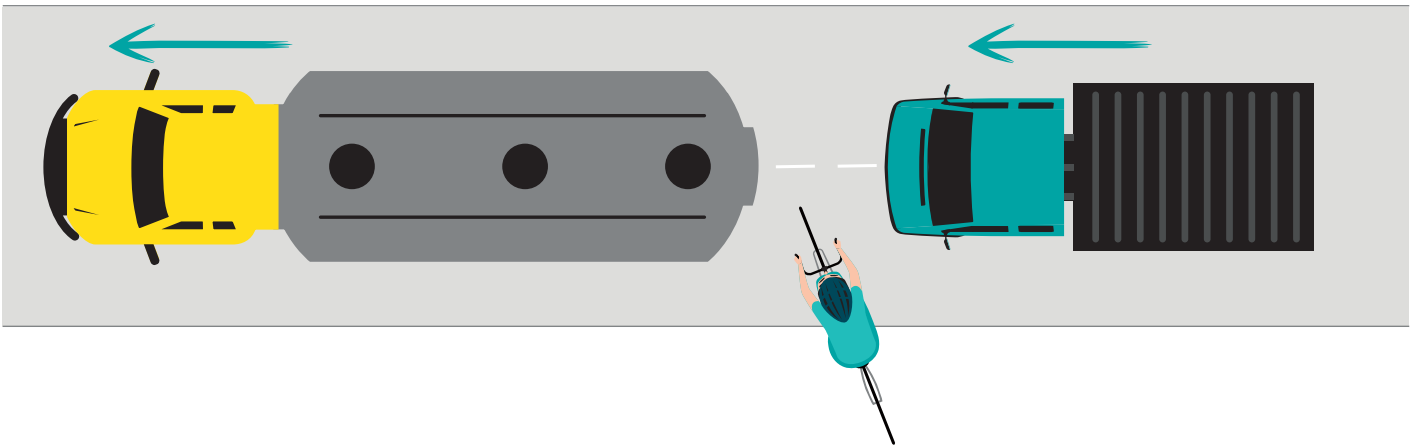
New: You should not cut across cyclists going ahead when turning into or out of a junction or changing direction or lane

Don't turn at a junction if doing so would cause a cyclist, who's travelling straight ahead, to stop or swerve.



New: Give way to cyclists and pedestrians

In slow moving traffic you should allow cyclists and pedestrians to cross in front of you.



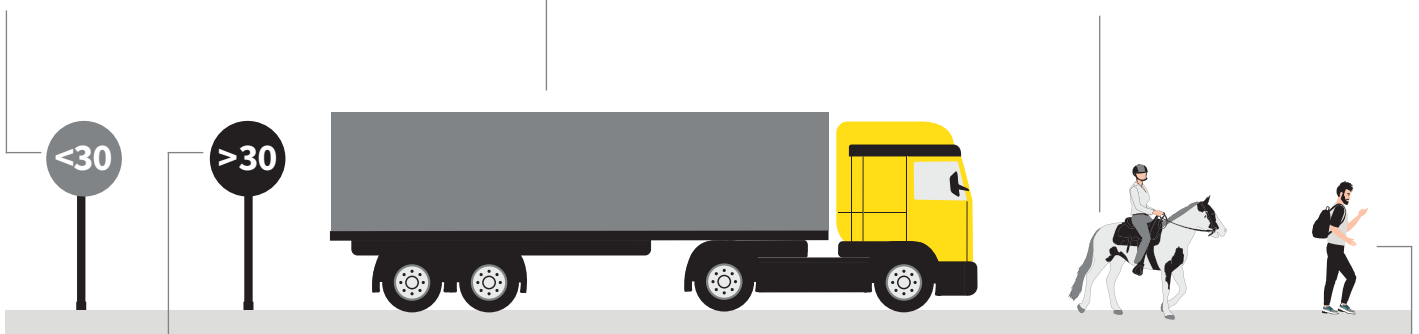
New: Give VRUs as much room as you would a car when overtaking

As a guide, you should:

Leave a minimum distance of **1.5 metres** at speeds **under 30 mph**

For a large vehicle, leave a minimum distance of **2.0 metres** in all conditions

Pass horse riders and horse-drawn vehicles at speeds **under 10 mph** and allow at least **2.0 metres** space



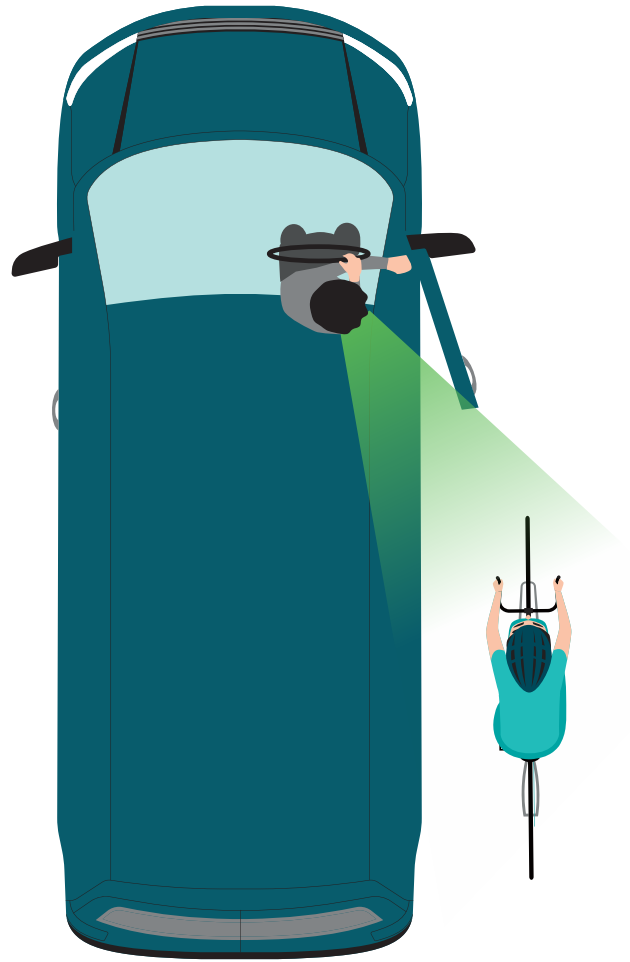
Leave a minimum distance of **2.0 metres** at speeds **over 30 mph**

Allow at least **2.0 metres** space where a pedestrian is walking in the road (e.g. where there is no pavement) and you should pass them at low speed.

New: Use the ‘Dutch Reach’ method

When opening the door of parked vehicles, utilise the ‘Dutch Reach’ method to avoid injury to cyclists, motorcyclists and/or pedestrians.

When opening your vehicle door, use your hand **furthest** from the door to reach across your chest. This movement forces your body and head to turn, allowing you to scan your rear view mirror and side mirror and check over your shoulder into your blind spot, enabling you to see if it’s safe before opening your door.



¹ The highway code: 8 changes you need to know, [gov.co.uk](https://www.gov.uk), January 2022

Contains public sector information licensed under the Open Government Licence v3.0